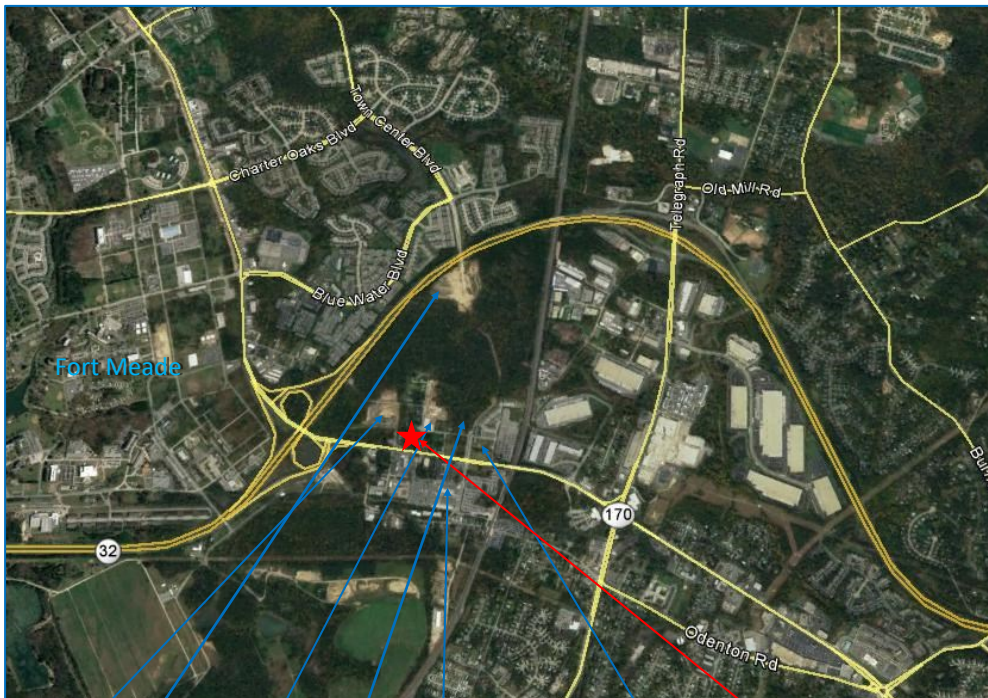


2.43+_{AC} GROUND LEASE / SALE

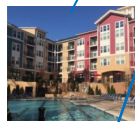
ODENTON TOWN CENTER CORE AT BALDWIN & ANNAPOLIS ROADS. ODENTON, MD



- 2.43+ acre site
- Ground Lease or Sale
- Zoned Odenton Town Center Core
- **Zoned for Gas/Convenience**
- MD 32 visibility; 1/10th of a mile off exit
- Hundreds of additional apts in for approval
- West county fastest growing



322 Baldwin



Echelon



Village at
Odenton Station

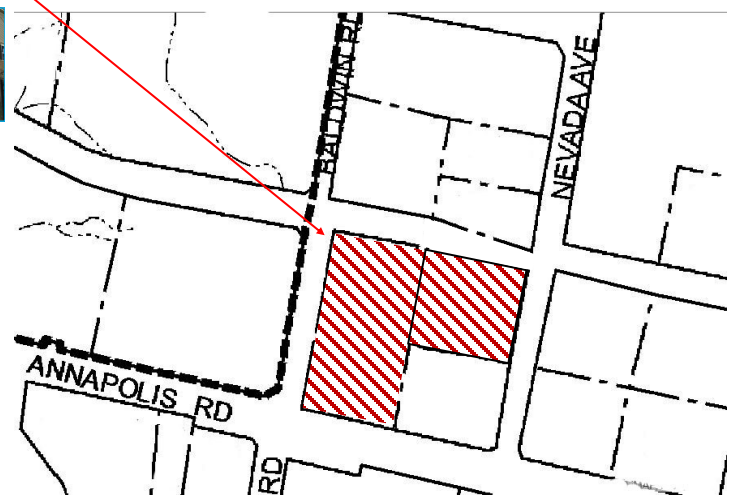


Town Center
Commons

900 Planned Units

150 New Units

- 2 blocks to MARC train
- Planned additional 1000 spot garage
- Less one than one mile to Fort Meade with a daytime population of 138,000+! Easy access to Fort Meade, NSA and Cyber Command Employees.
- Adjacent to 1,600 apartment units with 600 more planned.



The Odenton population increased 80.8% from the 2000 to the 2010 census and the median household income rose 51.8%, which is 40% higher than the Maryland state average. *City-data.com*

A. J. Properties, Inc.
Suite 102
8373 Piney Orchard Parkway
Odenton, Maryland 21113

Contact: Stuart Title
Phone: 410-551-9116
Fax: 410-551-9040
Email: stuart@ajprop.net



Disclaimer: All information regarding property(ies) offered is from sources deemed reliable; but no warranty is made as to the accuracy thereof and same is submitted subject to errors, omissions, change of price or conditions, prior sale, rental or withdrawal without notice.